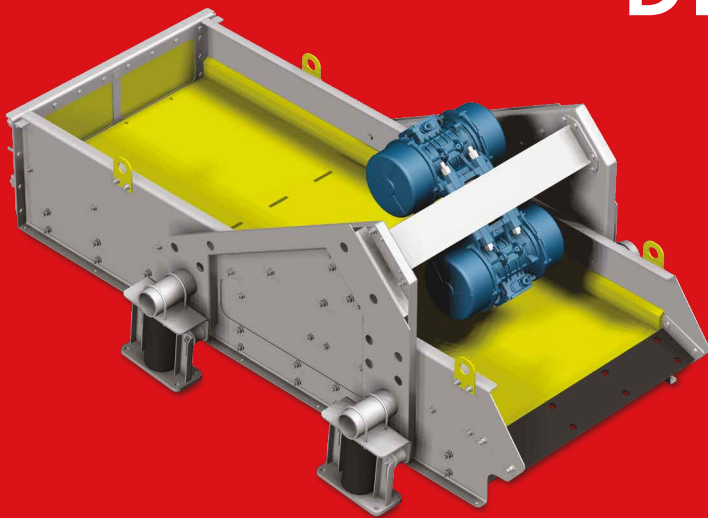


# DRAINING SCREEN BIROL EV



“ The DRAINING SCREEN BIROL EV is designed for draining of the solid particles contained in a slurry consisting of an average of 30% liquid and 70% solid. ”



## 1 | CUSTOMIZED DESIGN

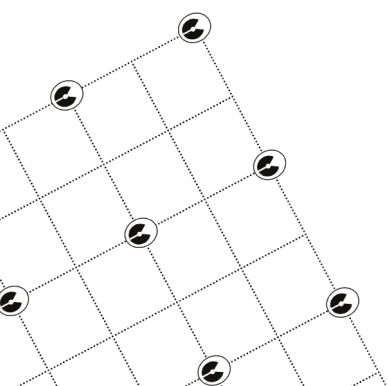
All design criteria such as speed, cuts, particle size distribution, food compatibility, temperature, etc. are integrated to design our machines (surface, amplitude, frequency of vibration, slope, cloths, etc.).

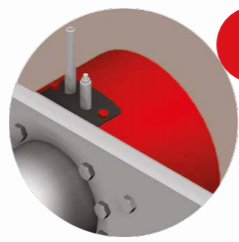
## 2 | APPLICATIONS

- Food industry
- Mineral industry
- Glassware
- Foundry sand, etc.

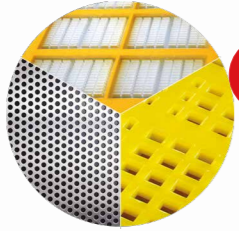
## 3 | USES

- DRAINING
- WASHING & RINSING
- WASHING WATER PURIFICATION

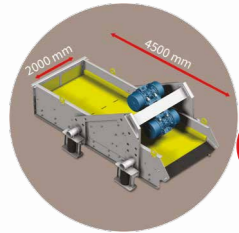




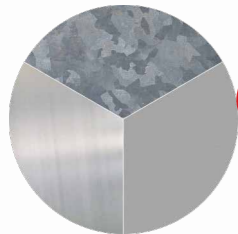
- 8 LUBRIFICATION (from 3.6m<sup>2</sup>)**
- Grease
  - Oil
  - Automatic lubrication



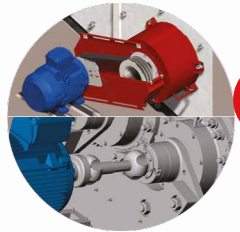
- 7 EQUIPMENTS**
- Steel or stainless steel fissures cloths
  - Perforated plates
  - Polyurethane modular panels



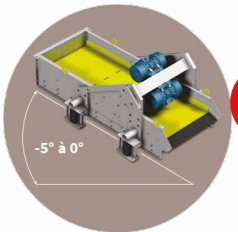
- 6 REQUIRED SPACE**
- Fully adjustable to your space constraints within the limits of design rules



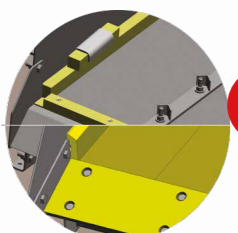
- 5 FINISH**
- Galvanized
  - Painted
  - Pickled and passivated stainless steel



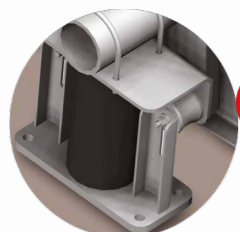
- 4 COUPLING**
- Pulleys and belts
  - Universal joint
  - Without (counterweighted motor until 3.6m<sup>2</sup>)



- 3 ERGONOMICS**
- Almost horizontal working plan



- 2 SECURING EQUIPMENT**
- Either longitudinal or clamping tightening
  - Either by fitting (modular panels)



- 1 SUSPENSION**
- By helical springs with amplitude limiters



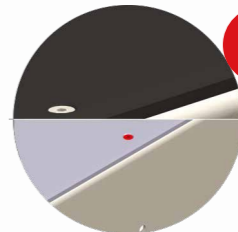
- 9 VIBRATING BODY**
- Bored, assembled and bolted
  - Fully removable



- 10 EXCITERS**
- Counterweighted motors
  - Counterweighted shafts with electrical, beat or hydraulic motor



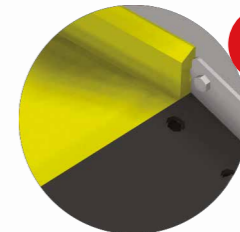
- 11 CONTROL**
- Variable speed unit
  - Engine-brake



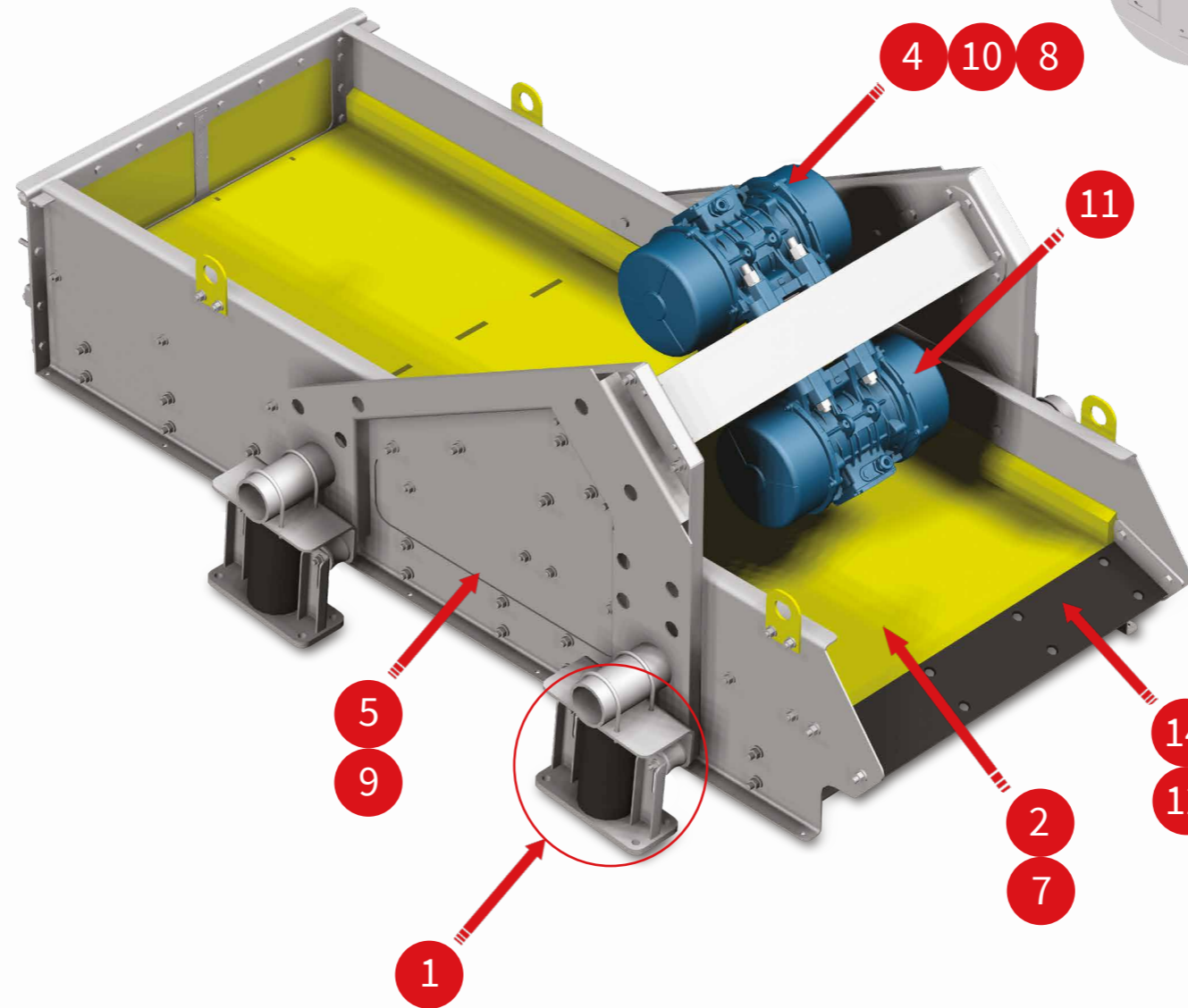
- 12 PROTECTION FOR ABRASIVE PRODUCT**
- By rubberizing
  - By shielding



- 13 WATER SPRAYING**
- Static
  - Vibrating



- 14 OUTLET THRESHOLD**
- Protected from abrasion



**4 | HIGHLIGHTS**

- VARIED EQUIPMENTS
- EFFICIENCY
- ADJUSTMENTS (AMPLITUDE, SLOPE, ETC.)
- ECONOMIC
- SAFETY

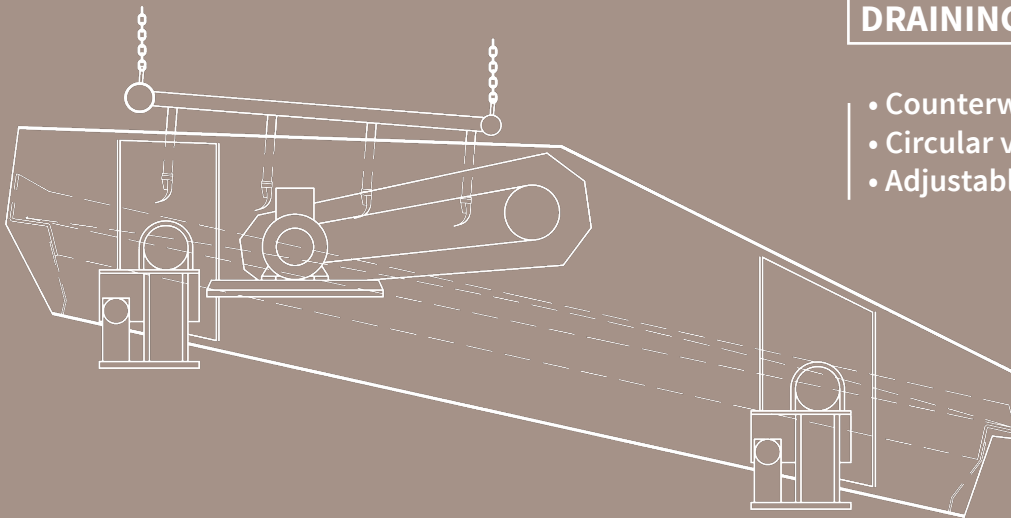
**5 | CHARACTERISTICS**

- Surface ..... 1.2 up to more 9 m<sup>2</sup>
- Acceleration ..... 5 G
- Amplitude ..... a few mm
- Speed ..... 1,500 rpm
- Slope ..... -5 to 0 degrees
- Number of decks ..... 1 to 2 decks
- Machine weight ..... up to 6 tons
- Length ..... 1,700 to 4,500 mm
- Width between sides ..... 750 to 2,000 mm
- Driving power ..... 0.7 kW to 15 kW
- Linear vibration in the vertical plan.....

## 6 | ADDITIONNAL TO THE DRAINING SCREEN RANGE

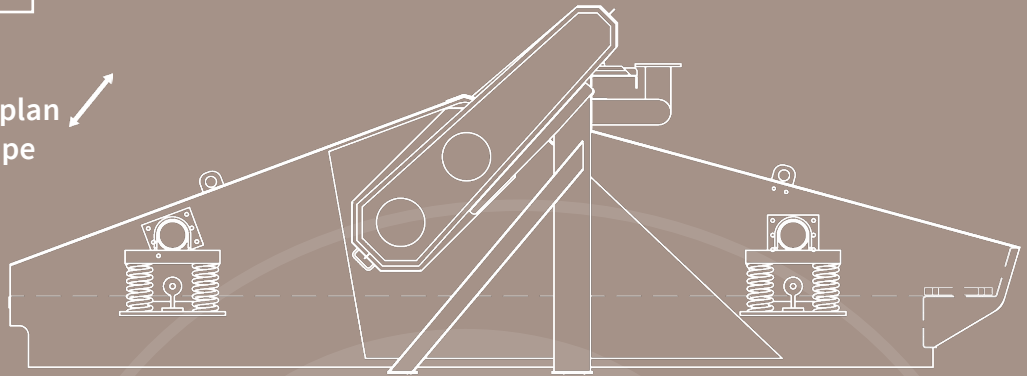
### DRAINING SCREEN ROL HM

- Counterweighted shaft(s)
- Circular vibration in the vertical plan
- Adjustable slope



### DRAINING SCREEN BIROL HZ

- 2 counterweighted shafts
- Linear vibration in the vertical plan
- Horizontal or slight upward slope



[www.chauvin.fr](http://www.chauvin.fr)

[info@chauvin.fr](mailto:info@chauvin.fr)

Phone : +33 (0)4 76 09 30 63

Fax : +33 (0)4 76 22 30 54

**Head Office**

20 rue des Grands Champs

ZI La Rollandière

38360 SASSENAGE - FRANCE

**PO Box**

BP 70015

38044 GRENOBLE CEDEX 9 - FRANCE

We remain at your disposal for any further information.  
CHAUVIN is a subsidiary of SINEX INDUSTRIE.